

ARCADE SQUARE

P4
Realty Group

For Lease

**11324 ARCADE DRIVE
LITTLE ROCK, AR 72212**

SUITE 18 1,200 sf +/- \$1,850/mo

NNN LEASE

Base Rent \$15.00/sf/yr + Est. CAM \$3.50/sf/yr

SPACE HIGHLIGHTS

- Welcoming reception/entry area.
- Multiple private offices with flexible configurations.
- Additional interior rooms for conference, storage, or collaborative use.
- Private in-suite restroom.
- Efficient central corridor layout.
- Suitable for medical, counseling, legal, or general professional office use.
- Built-to-suit options available to customize the space.
- Flexible layout supporting both client-facing and admin functions.

GEORGE PETROV,
PRINCIPAL BROKER



www.p4realtygroup.com



george@p4realtygroup.com

O: 501/224-9600

C: 501/413-3664

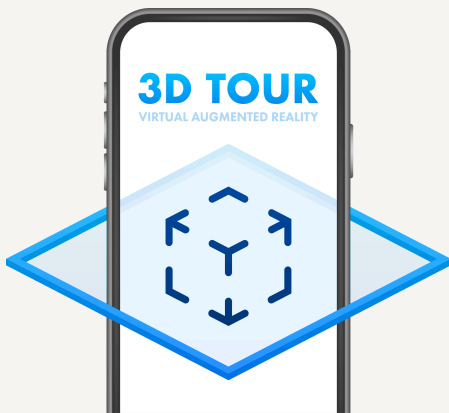
ARCADE SQUARE

11324 ARCADE DR., LITTLE ROCK, AR 72211

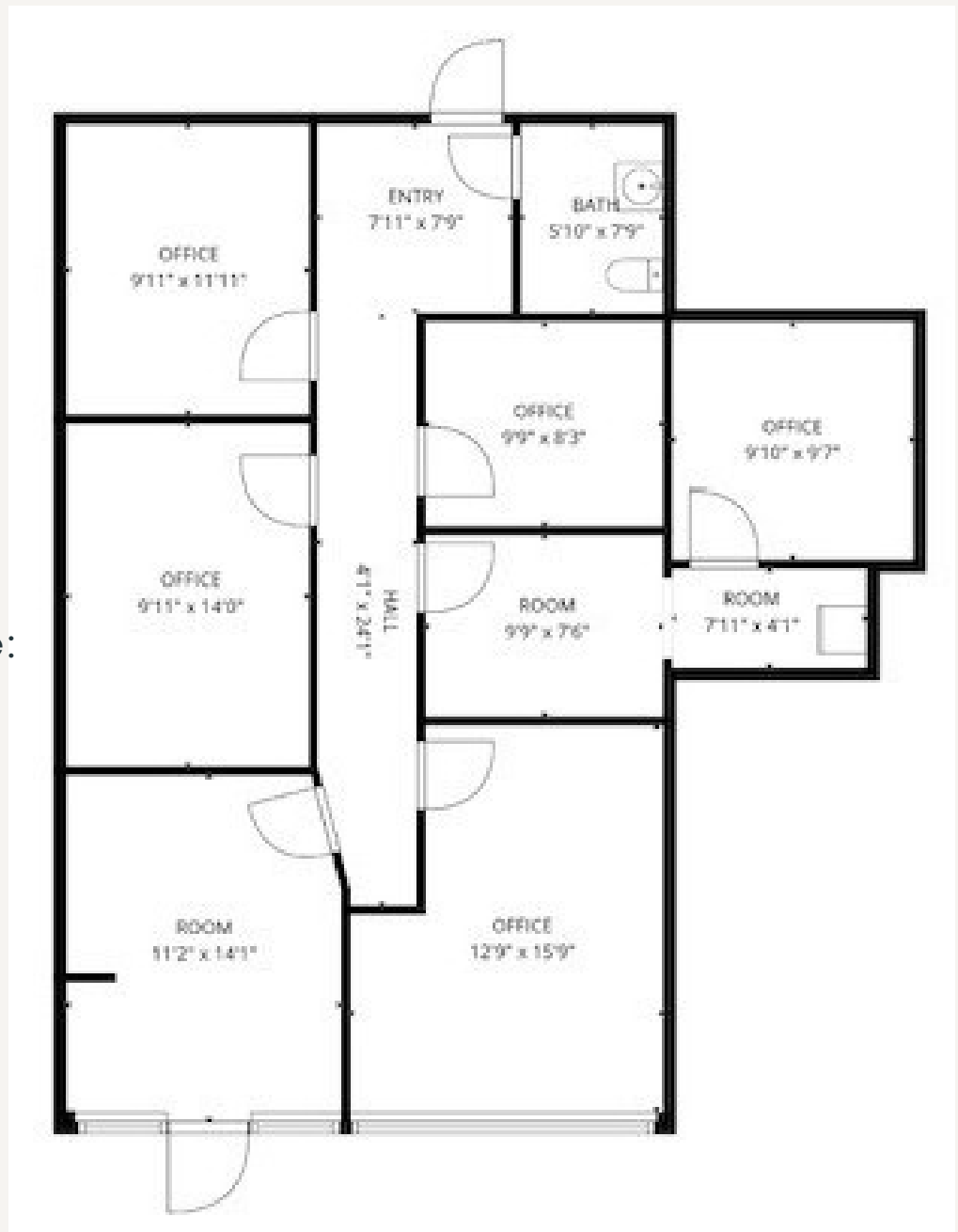
SUITE 18 - 1,200 SF +/-

P4
Realty Group

Floor Plan



Please visit our website:
P4realtygroup.com
for a 3D virtual tour.



Presented by:

George Petrov,
Principal Broker

501/224-9600

george@p4realtygroup.com

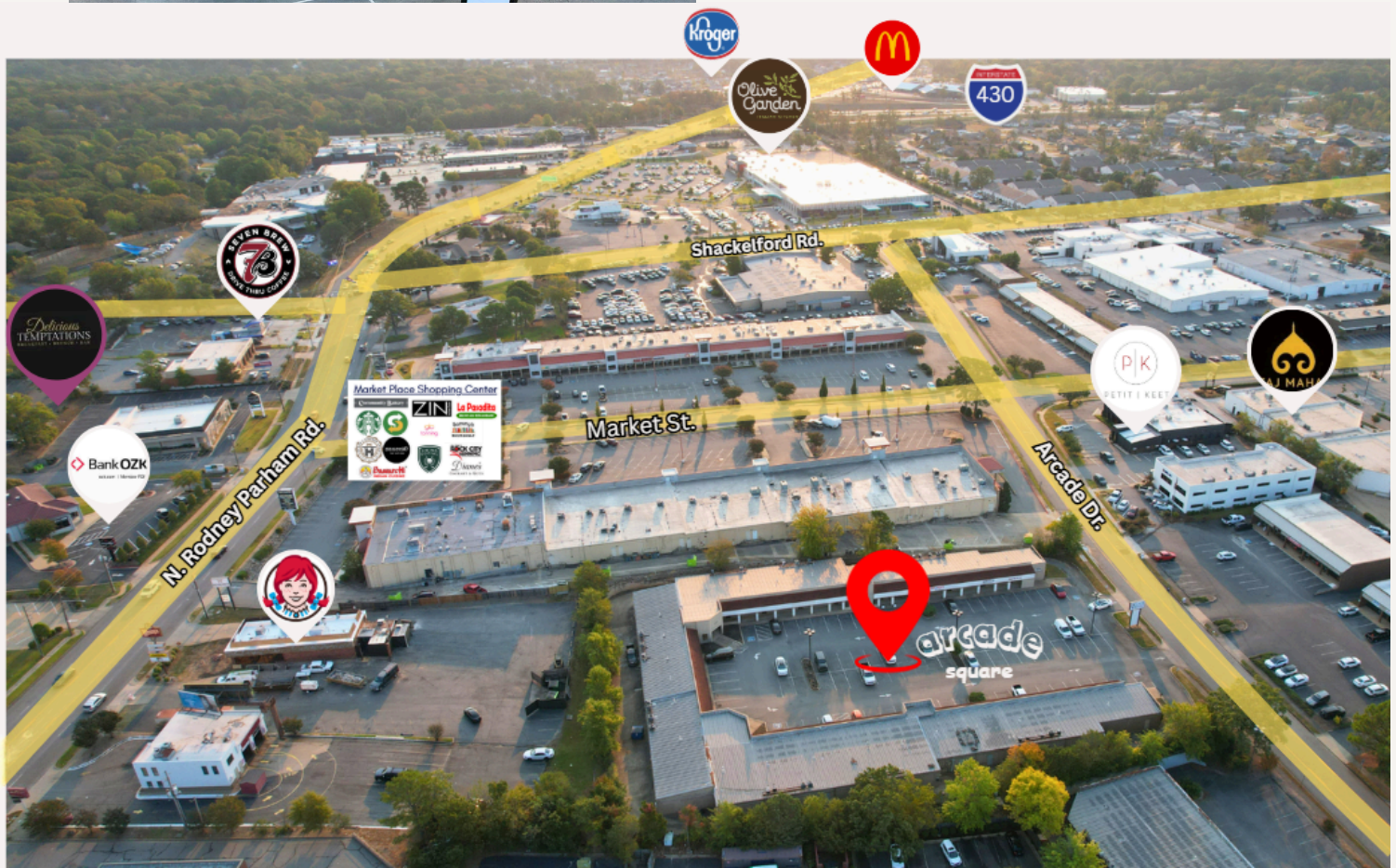
ARCADE SQUARE

11324 ARCADE DR., LITTLE ROCK, AR 72211
SUITE 18 - 1,200 SF +/-

P4
Realty Group



Nearby



Located at 11324 Arcade Drive, Arcade Square is conveniently located next to the Market Place Shopping Center, and less than 5 miles from The Promenade at Chenal. With easy access to I-430 and I-630, this centrally located property is ideal for businesses looking to thrive in a dynamic environment. Whether you're a startup or an established company looking to expand, this location offers the resources and environment needed for success. Don't miss out on this exceptional opportunity!