




COMMERCIAL SPACE AVAILABLE FOR LEASE

MARKET PLACE SHOPPING CENTER

 11121 N. RODNEY PARHAM ROAD
LITTLE ROCK, AR 72211

SUITE 5A1 - 2,000 SQFT +/-

\$20.50/SF/Yr, + Est CAM - \$5.00/SF/Yr
NNN Lease

PROPERTY HIGHLIGHTS

- Neighborhood shopping center anchored by Starbucks, Homer's, Community Bakery and Sauce(d).
- Digital, Pylon & Tenant signage available.
- Prime location with visibility from Rodney Parham Road, next to Homer's.
- 37,000 Vehicles Per Day



PRESENTED BY:

George Petrov

📞 501.413.3664

✉ george@P4realtygroup.com



MARKET PLACE SHOPPING CENTER

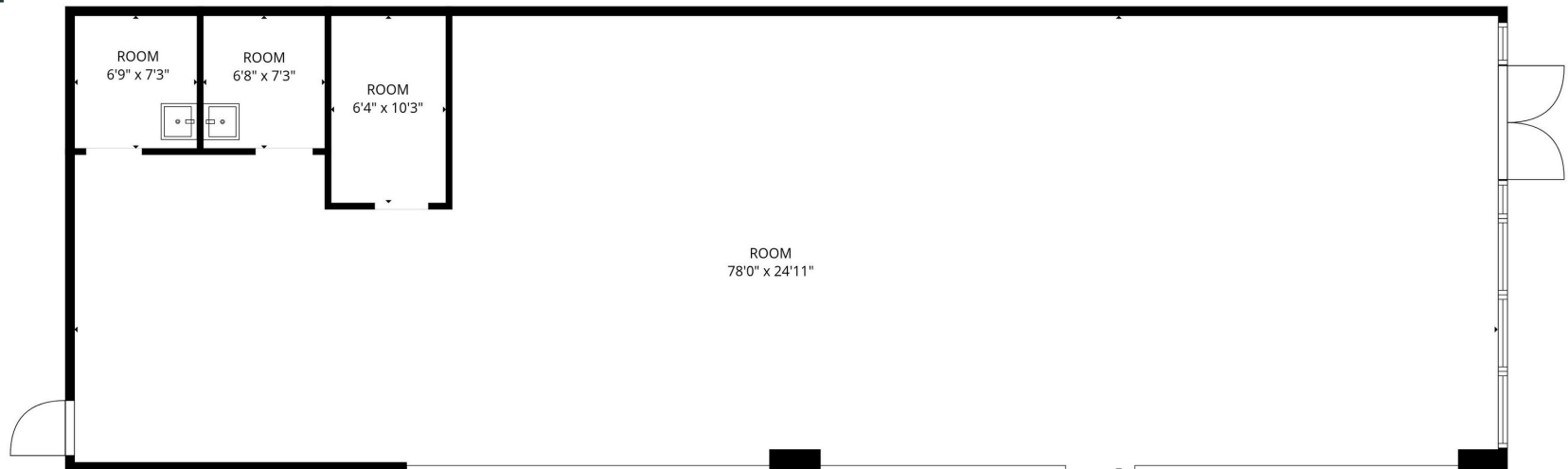
11121 N. RODNEY PARHAM ROAD, LITTLE ROCK, AR 72211

Suite 5A1 - \$20.50/SF/Yr, + Est CAM - \$5.00/SF/Yr
NNN Lease

P4
Realty Group

FLOOR PLAN

Suite 5A1
2,000 SF +/-



SUMMARY

- Versatile open floor plan.
- Space is capable of being subdivided for various business uses and needs.
- Positioned in a popular neighborhood shopping center anchored by Starbucks, Homer's, Community Bakery and Sauce(d).
- Digital, Pylon & Tenant signage available.
- Accessible to I-430, I-630, & Chenal Pkwy.

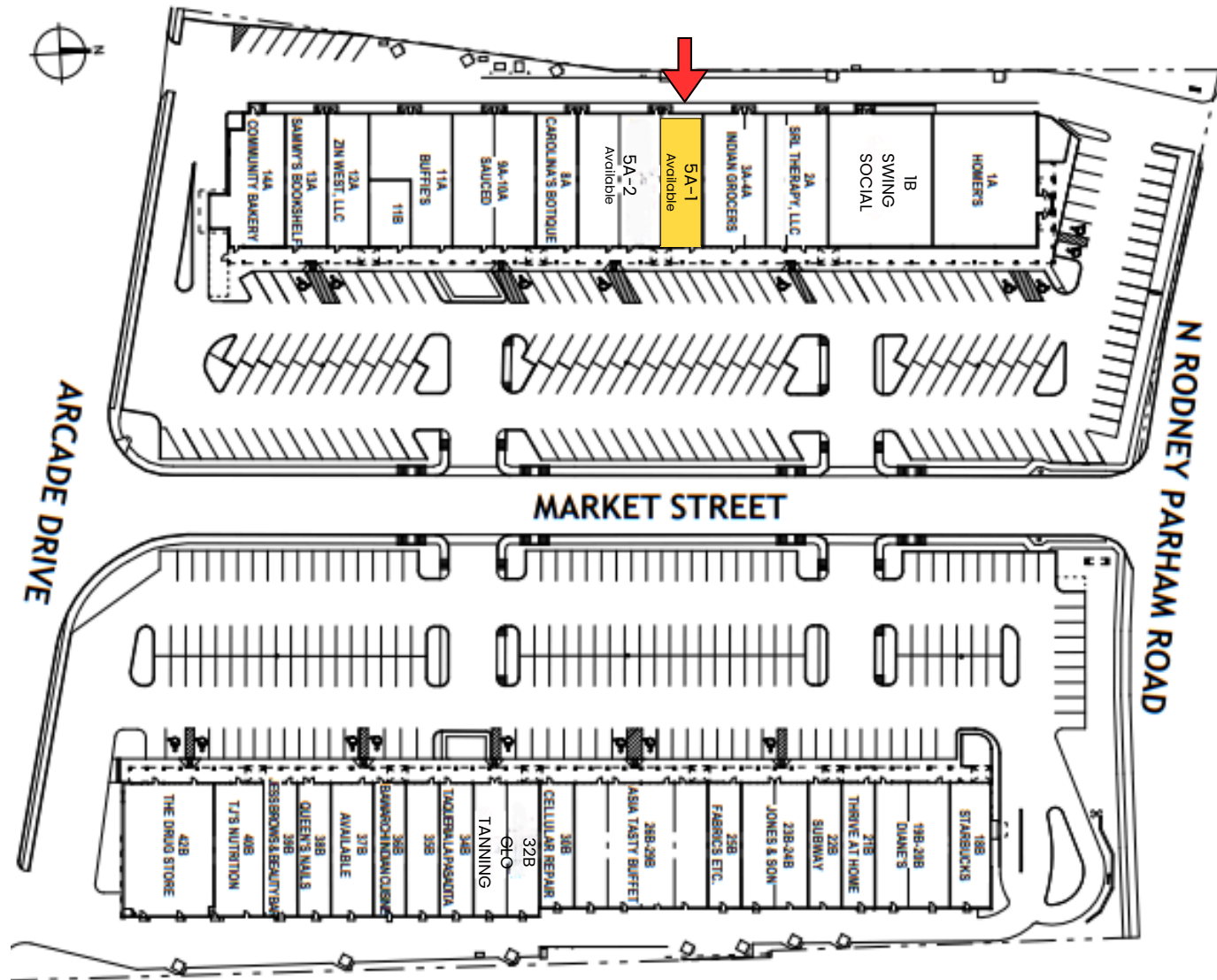
George Petrov
📞 501.413.3664
✉️ george@P4realtygroup.com

MARKET PLACE SHOPPING CENTER

11121 N. RODNEY PARHAM ROAD, LITTLE ROCK, AR 72211

SITE PLAN

P4
Realty Group



George Petrov

501.413.3664

george@P4realtygroup.com

MARKET PLACE SHOPPING CENTER

AREA MAP

11121 N. RODNEY PARHAM ROAD, LITTLE ROCK, AR 72211

P4
Realty Group

