

Modern, Renovated Office Space FOR LEASE



**1300 WESTPARK DR
LITTLE ROCK, AR 72204**

**SUITE 4
1,500 SF +/-**

*Modified Gross Lease
\$13.50/SF/Yr
\$1,688/Mo.*

Presented by:

George Petrov,
Principal Broker

📞 501/224-9600

✉️ george@p4realtygroup.com



5 Private Offices



*Upgraded LED lighting
throughout*



*Centrally located with
easy access to I-630
freeway*



Large Storage Space



Polished Concrete Flooring



*Minutes to amenities
including Target, Chick-
Fil-A, Park Plaza Mall,
& Starbucks.*

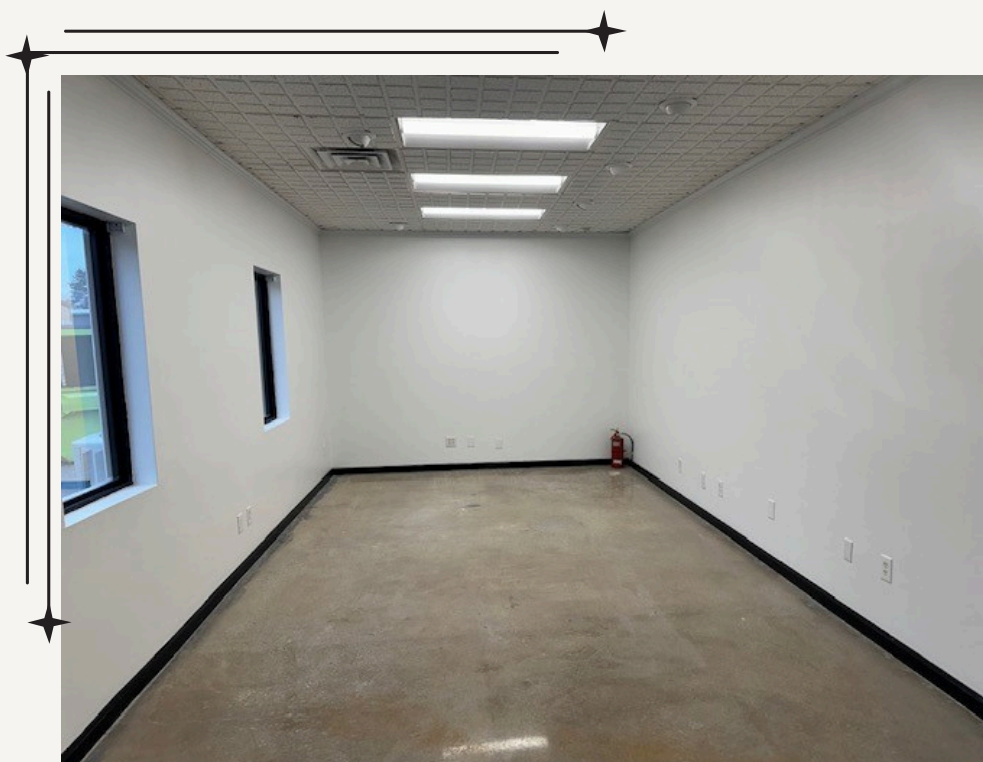
1300 WESTPARK DR.

LITTLE ROCK, AR 72204

SUITE 4

P4
Realty Group

Interior Photos

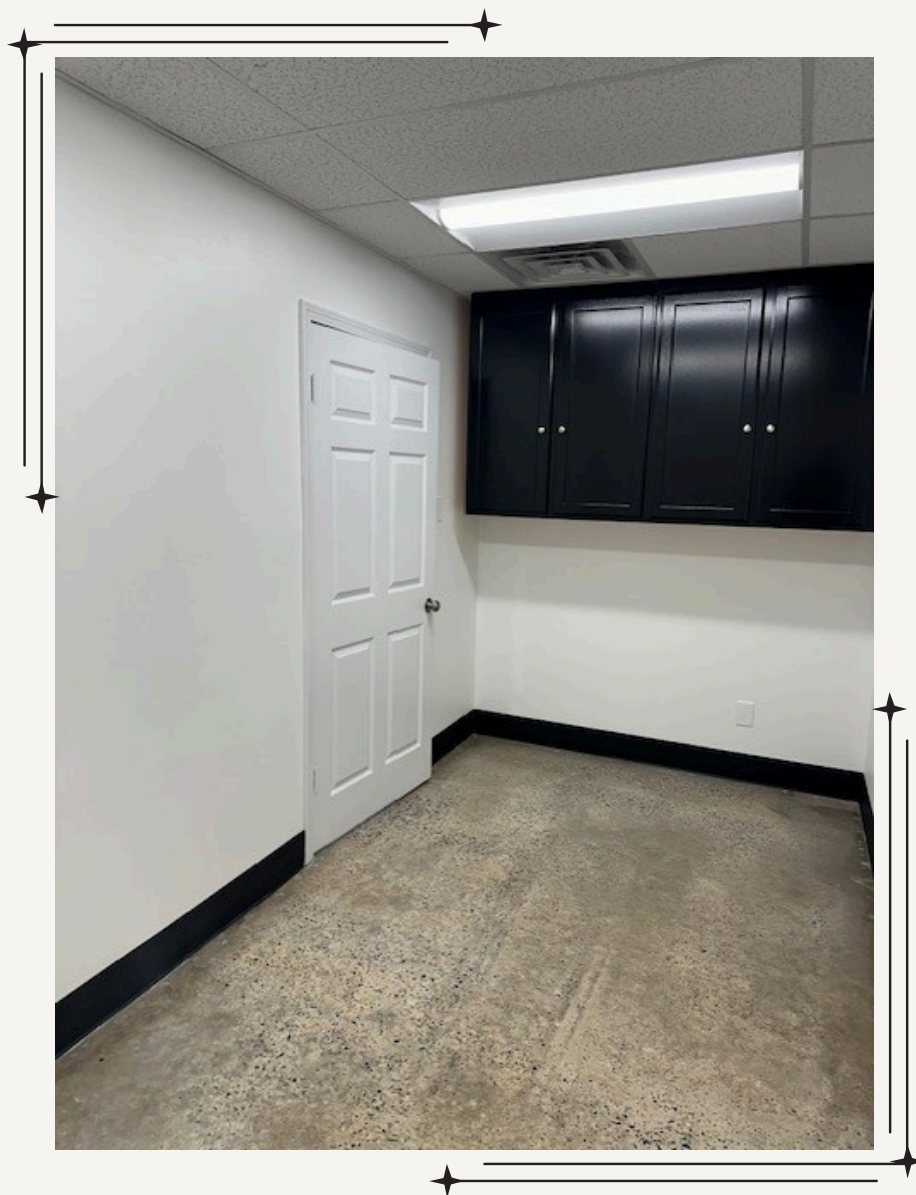


Additional Interior Photos



SUITE 4

1,500 SF +/-
\$13.50/SF/Yr
\$1,688/Mo



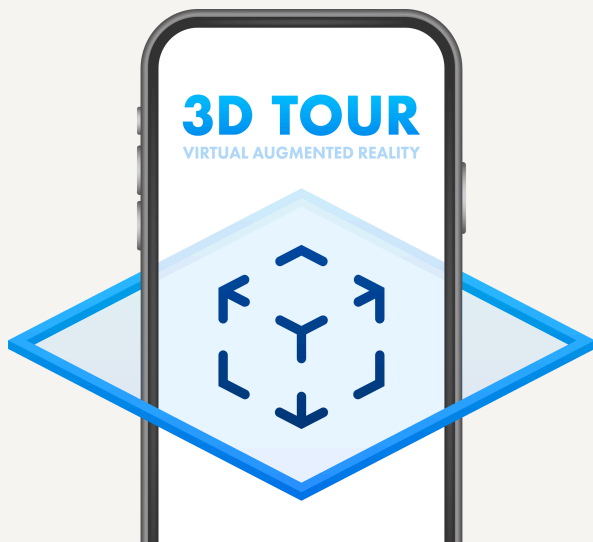
1300 WESTPARK DR.

LITTLE ROCK, AR 72204

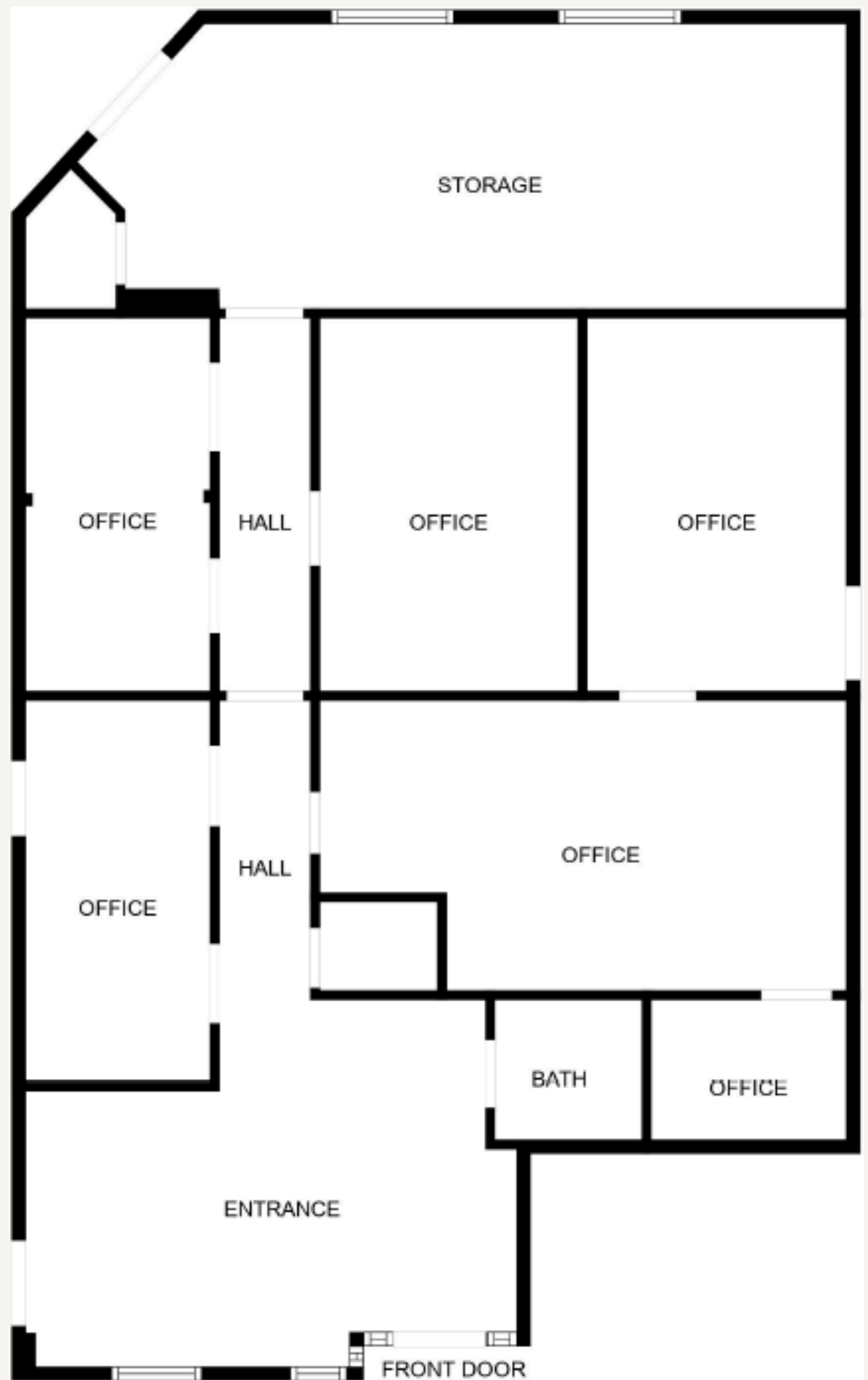
P4
Realty Group

Floor Plan

SUITE 4
1,500 SF +/-





Please visit our website:
P4realtygroup.com
for a 3D virtual tour.



Presented by:

George Petrov,
Principal Broker

501/224-9600 

george@p4realtygroup.com 

P4 Realty Group, LLC | 8221 Ranch Blvd Ste A-1 | Little Rock, AR 72223

501.224.9600 | www.p4realtygroup.com

1300 WESTPARK DR.
LITTLE ROCK, AR 72204

P4

Realty Group

Location Details

